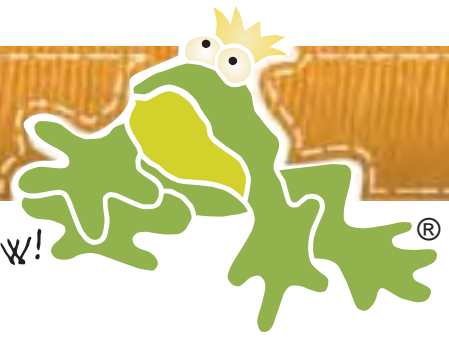


FUNKY FRIENDS FACTORY



Soft Toys you'll love to SEW!

Toy TIE Pattern ©2014

An original design
created by Pauline McArthur 2014

Hi there!

Welcome to the Funky Friends Factory.

*This is the latest addition to my
'Fun Stuff from Scraps Patterns'.*

*I found the cutest sock monkey fabric
and knew that Mitch would look
awesome in it.*

*The tie doesn't use too much fabric so
you can use up your fabric scraps from
your other craft projects*

Hope you like it as much as he does!!!

*Happy sewing!
Pauline*

Sizing:

This tie is designed to fit Mitch the Monkey.

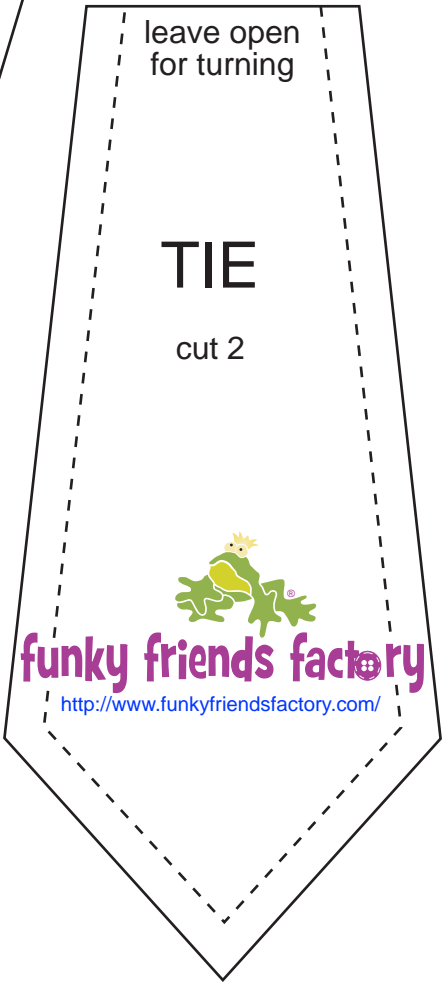
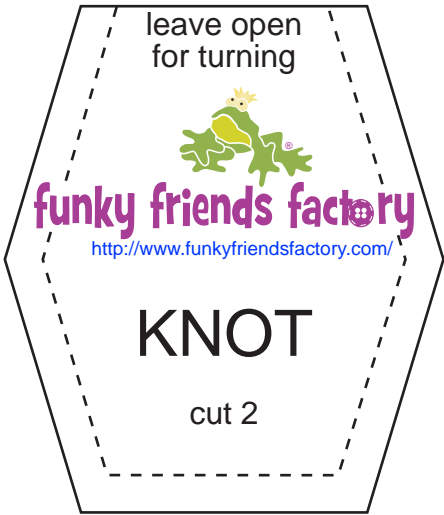


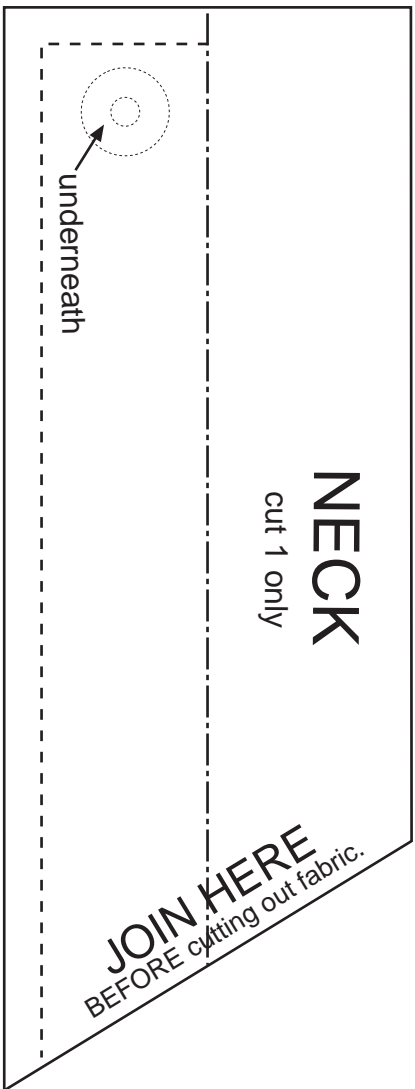
Recommended Fabric:

The tie is made from quilting cotton fabric.



www.funkyfriendsfactory.com







STEP 1

- ☐ Sew the KNOT PIECES and TIE PIECES together in pairs.
- ☐ Fold and sew the NECK PIECES as shown on the pattern markings, leaving it open on one of the short ends for turning.



STEP 2

- ☐ Clip the seams at the corners, and turn the pieces right sides out.

TIP: I like to use a chopstick to poke into the corners to make sure the corners are turned nicely and then press them with a cool iron so they are nice and flat.



STEP 3

- ☐ Pin the TIE PIECES to the NECK PIECES, roughly in the middle.



STEP 4

- ☐ Pin the KNOT PIECES on top of the TIE PIECES, I have highlighted the KNOT PIECES in yellow.

* Always sew fabric pieces with right sides together.

* Use a 5mm/¼inch seam unless stated otherwise.



STEP 5

- ☐ Sew the KNOT and TIE PIECES to the NECK PIECES.

TIP: Sew as close to the edge of the NECK PIECE as you can. (I sewed a second line of stitching as my first wasn't close enough!)

- ☐ Zig-zag across the open seams to stop them from fraying.



STEP 6

- ☐ Fold the KNOT PIECES up and pin them to hold the KNOT straight.



STEP 7

- Fold the KNOT PIECES down at the back of the NECK PIECES and pin them in this position.



STEP 8

- Hand sew the edge of the KNOT PIECES to the NECK PIECES.



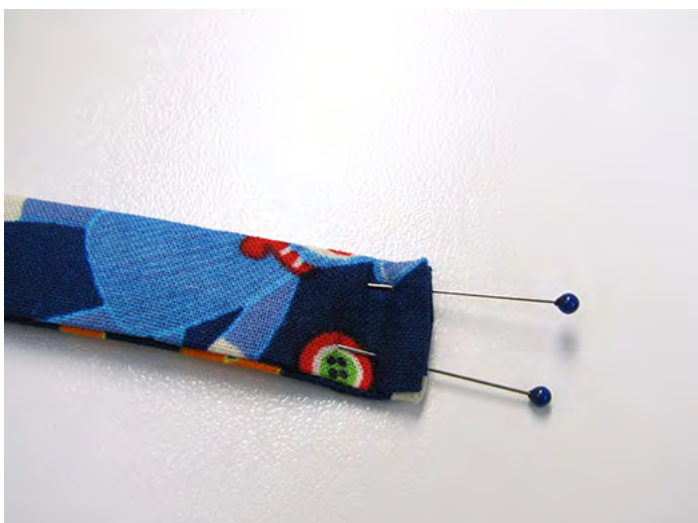
STEP 9

- Sew the KNOT PIECES together at the sides, catching both ends of the KNOT PIECES. This makes the KNOT PIECE look more like a real tie!



STEP 10

- ☐ Sew one piece of the press studs (snaps or poppers) to the one end of the NECK PIECES.



STEP 11

- ☐ Turn under a 5mm/¼inch seam at the other end of the NECK PIECES and sew it closed.



STEP 12

- ☐ Fit the tie to Mitch's neck to see where to sew the other half of the press stud (snap or poppers.)

STEP 13



- ☐ Hand sew the other piece of the press stud (snap or poppers) in place.

STEP 14



- ☐ Mitch's tie is ready to wear!
- ☐ Tell your Monkey how FABULOUS he looks in his new tie! :D



COPYRIGHT Infomation:

I get great pleasure knowing that other people like me can use my Funky Friends Factory doll and toy patterns at home to **make some money with their sewing talents!**

AND... I am quite happy for people to sell the toys that they make from my pattern designs **as long as they follow the Copyright Guidelines.** If you want to make Funky Friends toys to sell ~ please visit my website to find out how we can work together, to help YOU make some money and help ME to keep doing what I love to do...**Make MORE patterns for YOU!**

<http://www.funkyfriendsfactory.com/sell-funky-friends-factory-toys/>

I have faith that you will respect the long hours and creative energy that have gone into producing the Funky Friends Factory patterns.

Thank you, Pauline.