

Soft Toys you'll love to make!

Honey TEDDY

An original design
created by Pauline McArthur 2005

Hi there!

Welcome to the Funky Friends Factory.

*Thanks so much for downloading my Free
Teddy Pattern - it's great to have you
onboard.*

*I'm Pauline, and I have designed all my soft
toy patterns to be as simple as possible,
without compromising on CUTE!*

*Honey Bear is also the OFFICIAL pattern
for the Billion Bears Charity Drive - take a
peek at the website if you'd like to find out
more, and pleeeeee send me a photo of
YOUR Honey Bear.*

*I hope you'll enjoy my little critters as much
as I do.*

*Happy sewing!
Pauline*

Finished Toy Size: **33cm/13inches**

Honey is one of the simplest and cutest teddy patterns around. With her slightly knocked knees and cute little bottom in the air, she is simply adorable.

As you make her, you will learn the basics of how to make your own soft toys and pick up a few tips & tricks to make it easy and fun!



Recommended Fabric:

One fat quarter of QUILTING FABRIC/COTTON is enough to make one teddy. (55cm wide x 45cm)

I love making my teddies from FLEECE as it makes them so cuddly! You can use any type of fleece, as well as other stretch fabrics eg. minky, cuddle, velour, chenille and flannelette.



✉ P O BOX 814 Aspley, 4034
QLD Australia.

www.funkyfriendsfactory.com

STEP 1 - Get all your materials

Specific Requirements :

- Caramel fleece (or cotton fabric) - 55cmx45cm/ 22inchx18inch.
- 12mm(1/2inch) beads, buttons, craft eyes or embroidery thread.
- Pink embroidery cotton for the nose.
- Strong thread for sewing on eyes.
- Ribbon - 70cm/ 28inches.

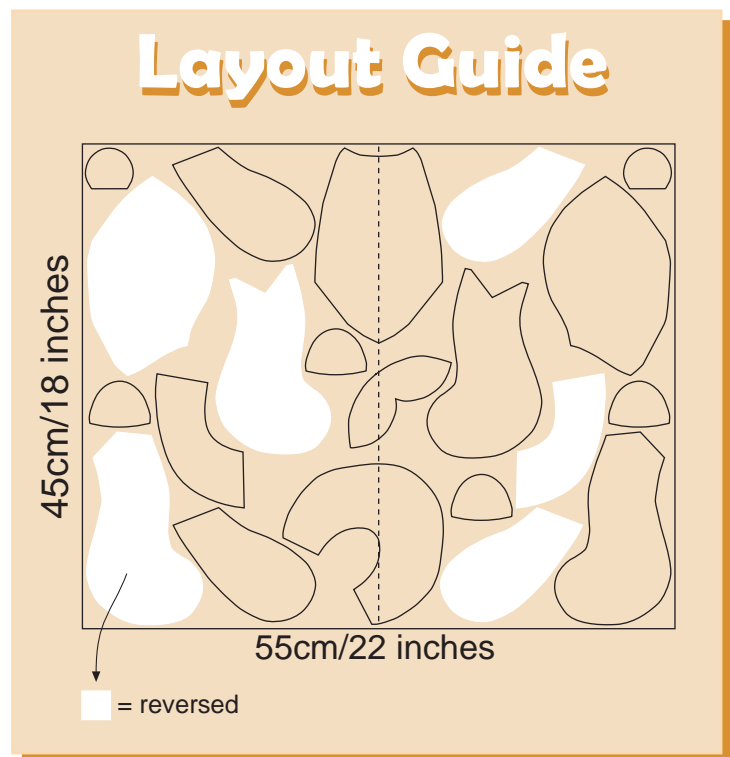
General Requirements :

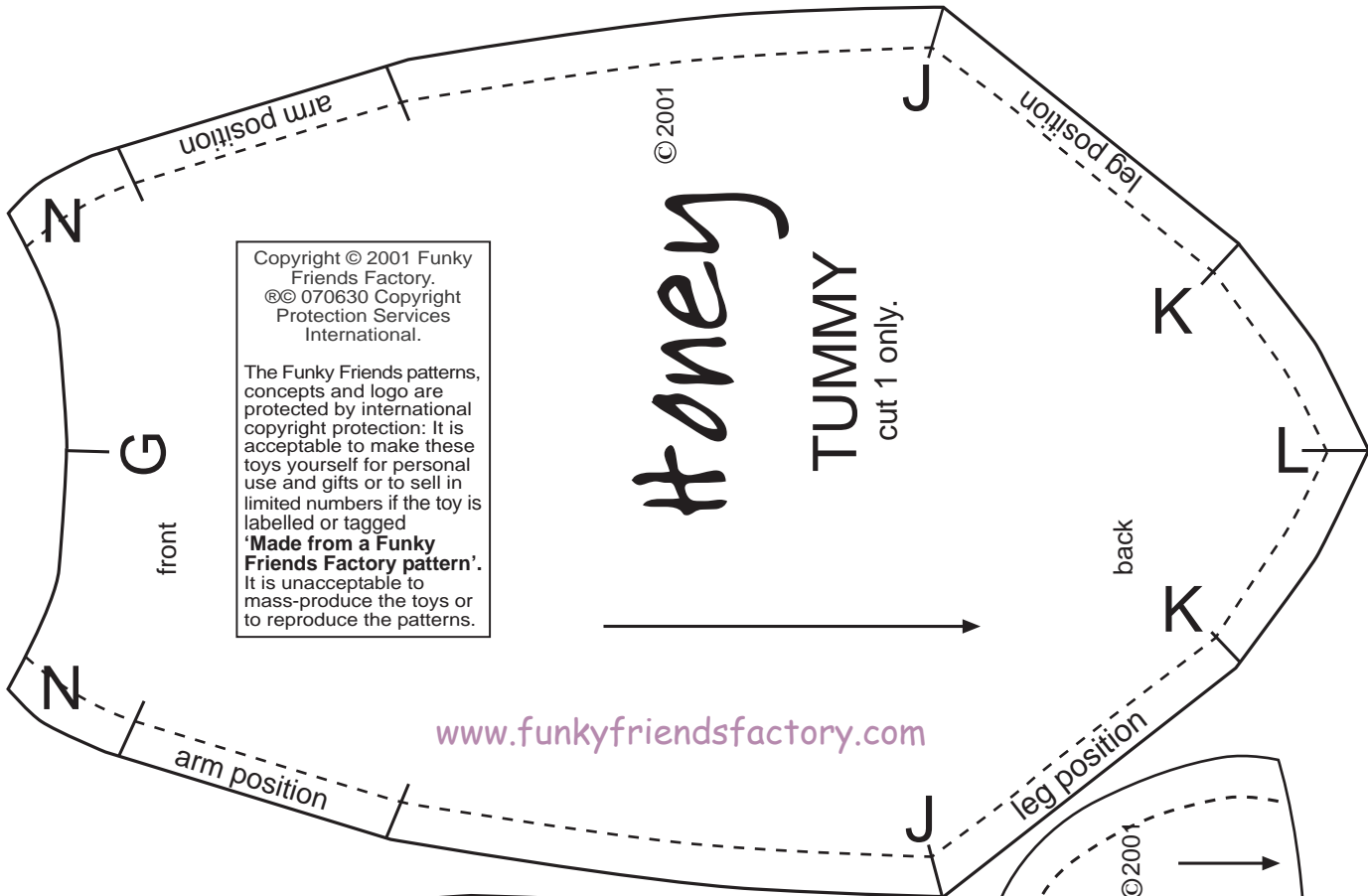
- General sewing supplies (thread, pins, needles, scissors, etc).
- Craft glue & firm card for templates.
- Fine tipped permanent marker pen.
- Toy stuffing.



STEP 2 - Cut out your fabric

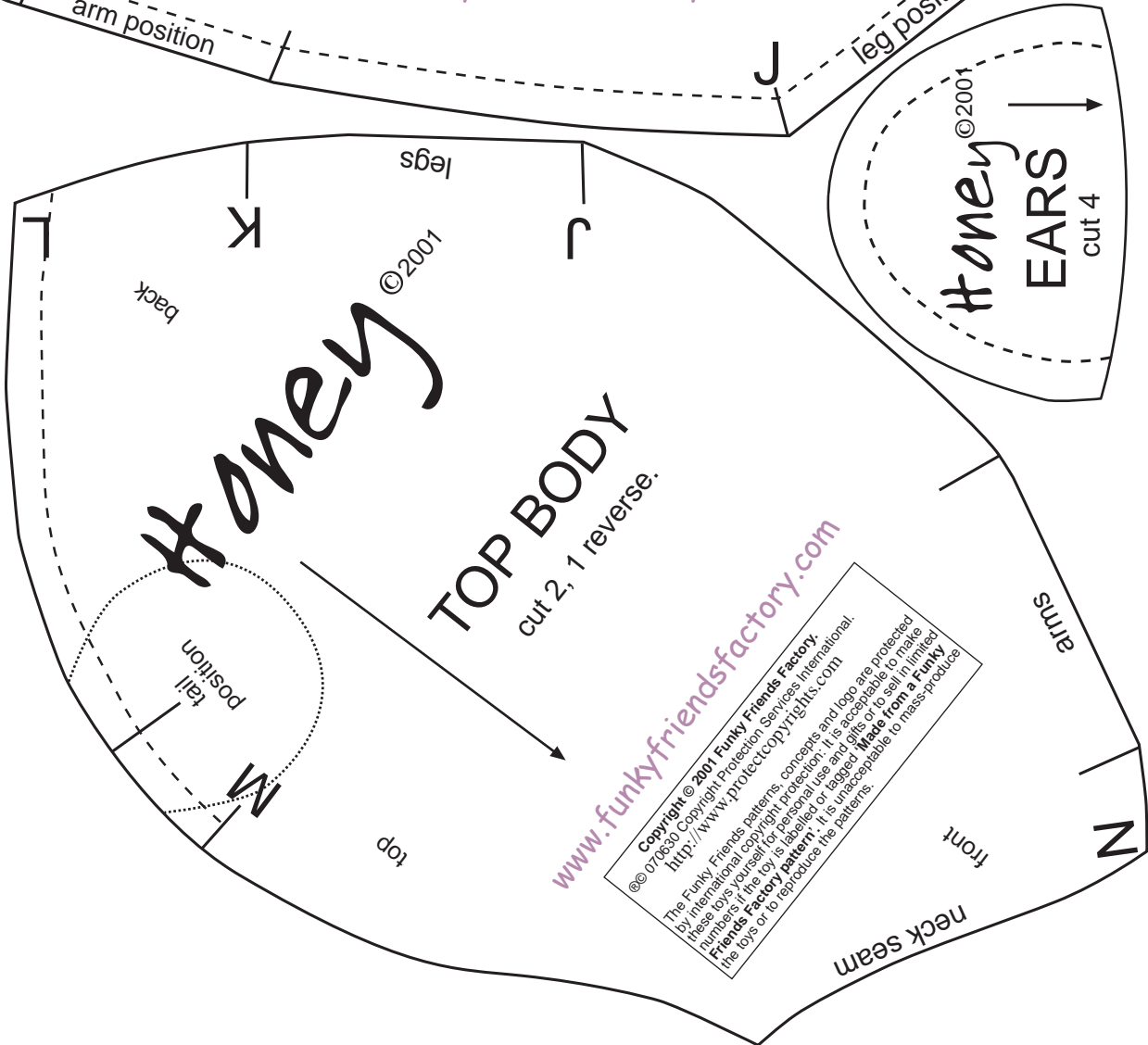
- Glue the pattern pages onto card or thick paper and cut out the pattern pieces to make your templates.
- Lay the fabric right side down with the grain/pile running down towards you.
- Place your templates onto the wrong side of the fabric making sure the arrows point towards you.
- Trace the templates lightly with a permanent marker. (Be careful not to press too hard or the ink will smudge and may even show through your fabric on the right side.)
- Cut ALL of your pieces out of caramel coloured fabric.

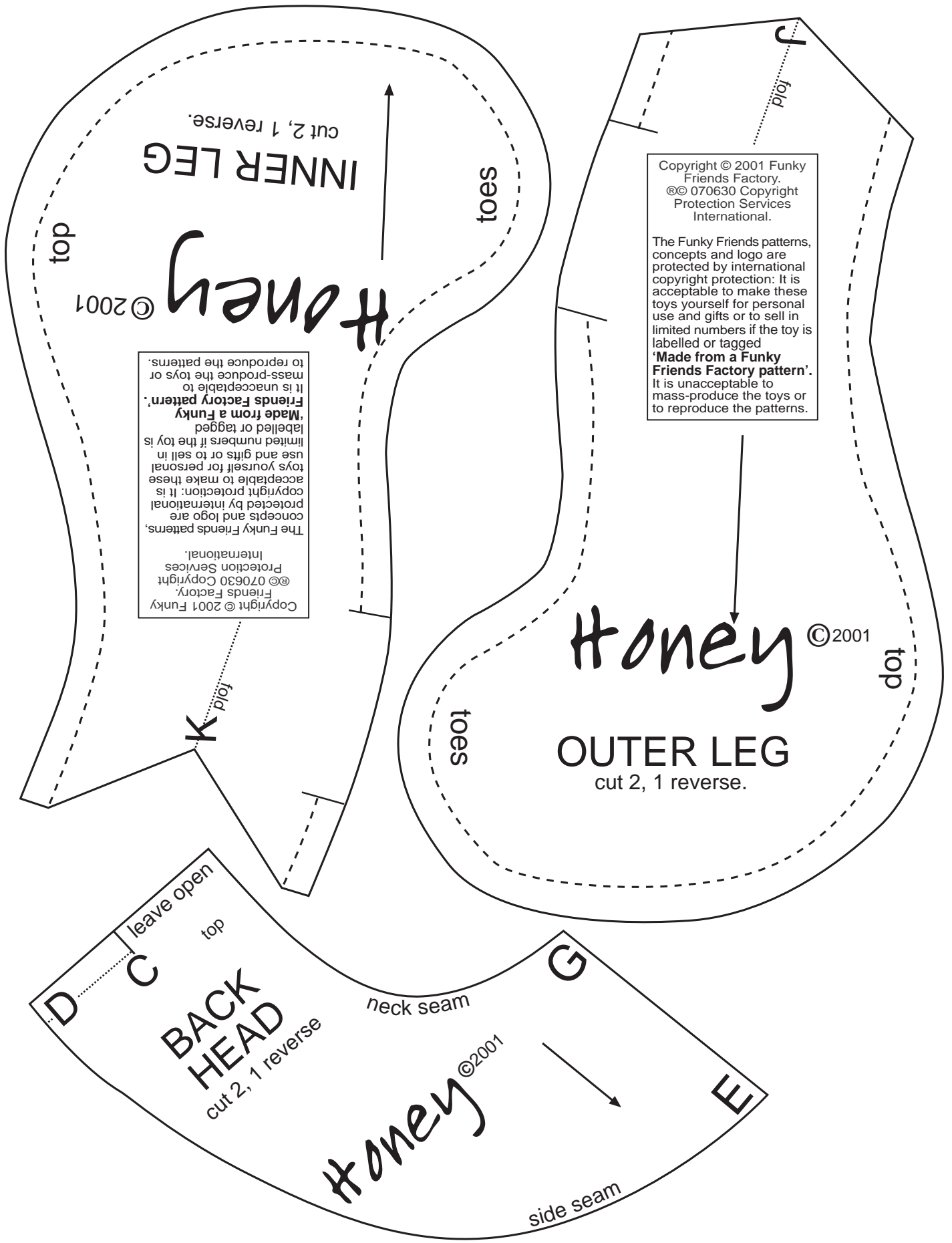




Copyright © 2001 Funky Friends Factory.
 ©© 070630 Copyright Protection Services International.

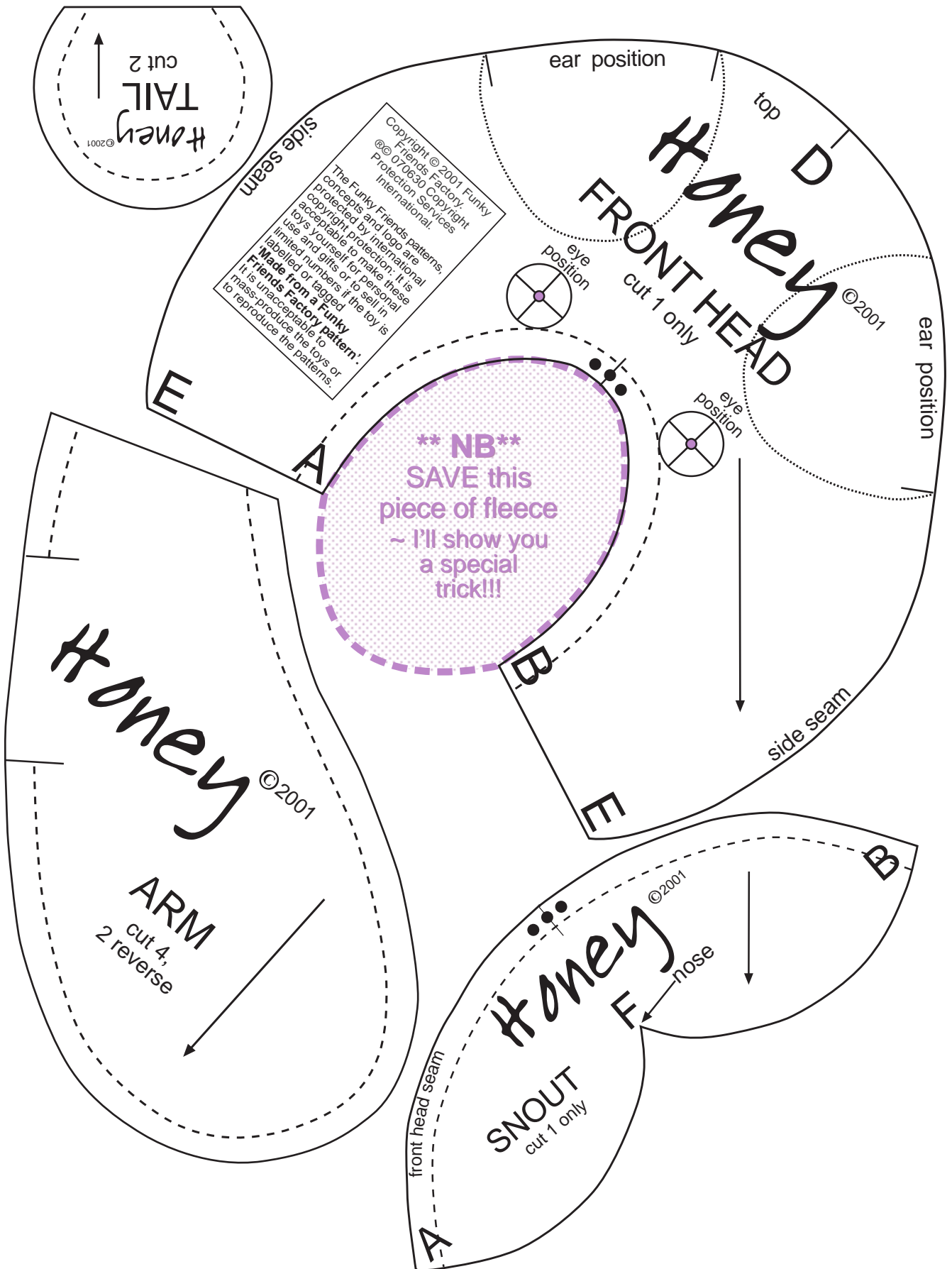
The Funky Friends patterns, concepts and logo are protected by international copyright protection. It is acceptable to make these toys yourself for personal use and gifts or to sell in limited numbers if the toy is labelled or tagged 'Made from a Funky Friends Factory pattern'. It is unacceptable to mass-produce the toys or to reproduce the patterns.





Copyright © 2001 Funky Friends Factory. ©© 070630 Copyright Protection Services International. The Funky Friends patterns, concepts and logo are protected by international copyright protection: It is acceptable to make these toys yourself for personal use and gifts or to sell in limited numbers if the toy is labelled or tagged 'Made from a Funky Friends Factory pattern'. It is unacceptable to mass-produce the toys or to reproduce the patterns.

Copyright © 2001 Funky Friends Factory. ©© 070630 Copyright Protection Services International. The Funky Friends patterns, concepts and logo are protected by international copyright protection: It is acceptable to make these toys yourself for personal use and gifts or to sell in limited numbers if the toy is labelled or tagged 'Made from a Funky Friends Factory pattern'. It is unacceptable to mass-produce the toys or to reproduce the patterns.



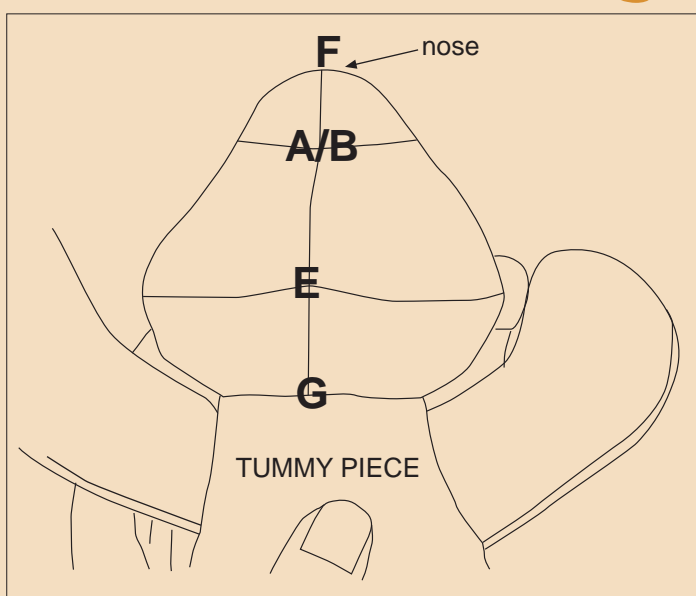
Let's get sewing...

- Always sew the fabric pieces with the right side of the fabric together, UNLESS the instructions tell you to do something different.
- A 5mm($\frac{1}{4}$ inch) seam is included so you will sew 5mm($\frac{1}{4}$ inch) INSIDE the lines you traced. Do not add on a seam allowance UNLESS the instructions say so!
- Look at each pattern piece - the dashed line on the pattern piece is a useful guide to show you the FIRST seam you will sew on each piece.

STEP 3 - Sew the head

- Sew the **SNOUT PIECE** to the **FRONT HEAD PIECE** from A – B, matching the 3 dots of the pattern markings.
- Sew 2 **EAR PIECES** together, turn right side out. Do the same for the other ear.
- Sew the **BACK HEAD PIECES** together from C – D.
- Pin the ears in position on the **FRONT HEAD PIECE**, then sew the **BACK HEAD PIECES** to the **FRONT HEAD PIECE** at the side seam. Sew from E – D and then down the other side of the head – E.
- Fold the snout at F so you can sew the **SNOUT**, **FRONT HEAD** and **BACK HEAD PIECES** closed from F - (sew past A/B) - E - G.

HEAD Sewing Diagram



Head Sewing Diagram

This is a view from under the (finished teddy's head).

This should help you to understand how to sew the head.

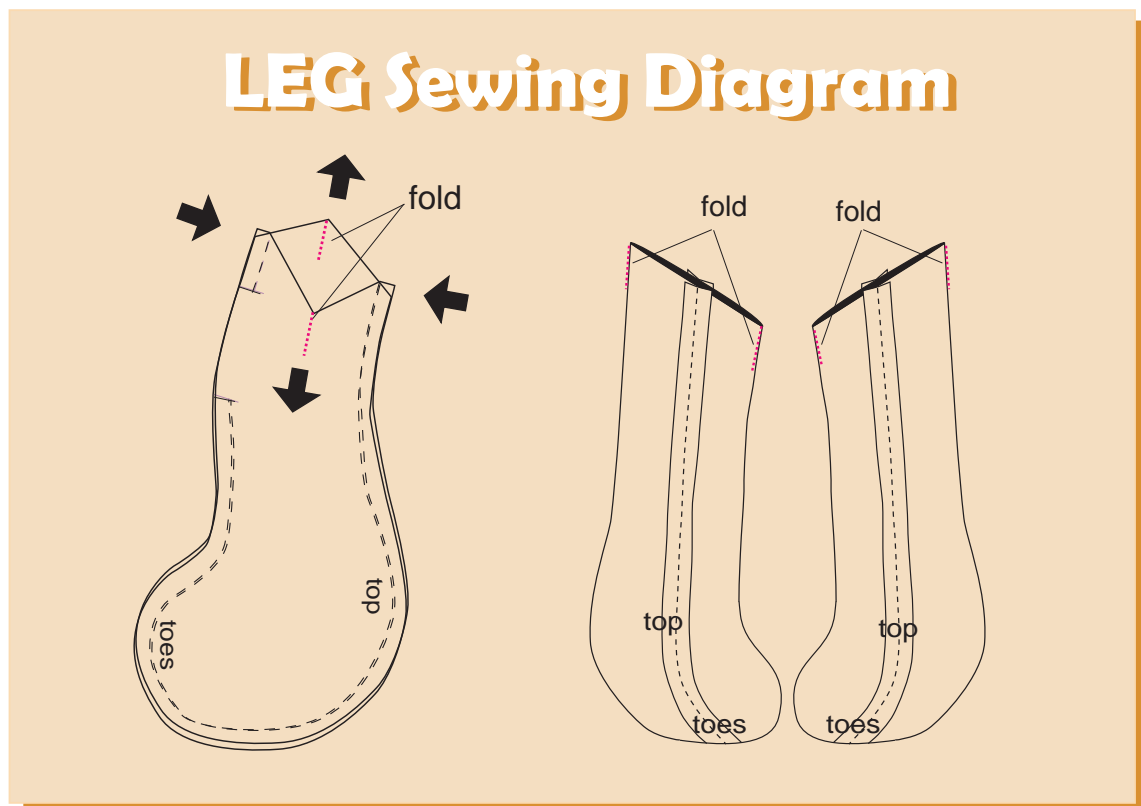
Matching the letters on the pattern pieces can get a bit confusing!

STEP 4 - Sew the tail

- Sew the **TAIL PIECES** together, turn right sides out.
- Place a little bit of toy stuffing in the tail.
- Place the tail in position, using the pattern markings to guide you.
- Sew the **TOP BODY PIECES** together from L - M, with the tail in between them.

STEP 5 - Sew the arms and legs

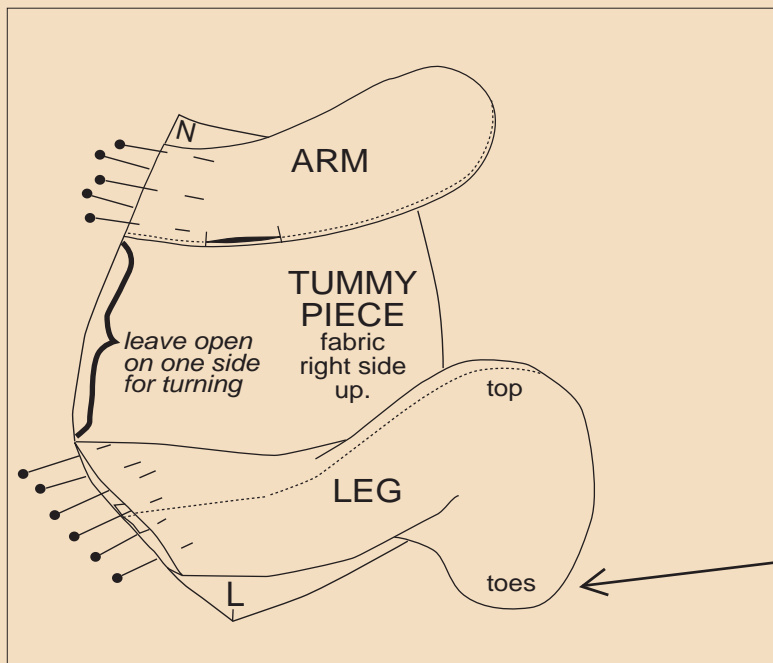
- Sew the **ARM PIECES** together. Remember to leave the gap open for stuffing the arms.
- Turn the arms right side out.
- Sew one **INNER LEG** to one **OUTER LEG PIECE** and repeat for the other leg. Remember to leave the gap open for stuffing the legs.
- Turn the legs right side out.



STEP 6 - Pin arms and legs to the body

- Place the **TUMMY PIECE** with the fabric right sides UP.
- Pin one arm and one leg in position on one side of the **TUMMY PIECE**, then pin the other arm and leg on the other side. (I find it is easier to pin one side at a time).
- Make sure the 'toes' of the **LEG PIECE** are facing/ touching the table.

ARM & LEG Pinning Diagram



Lay the **TUMMY PIECE** on the table with the RIGHT side of the fabric facing upwards.

Pin one arm and one leg first as shown in the diagram. Then pin the other arm and leg on the other side.

NB*

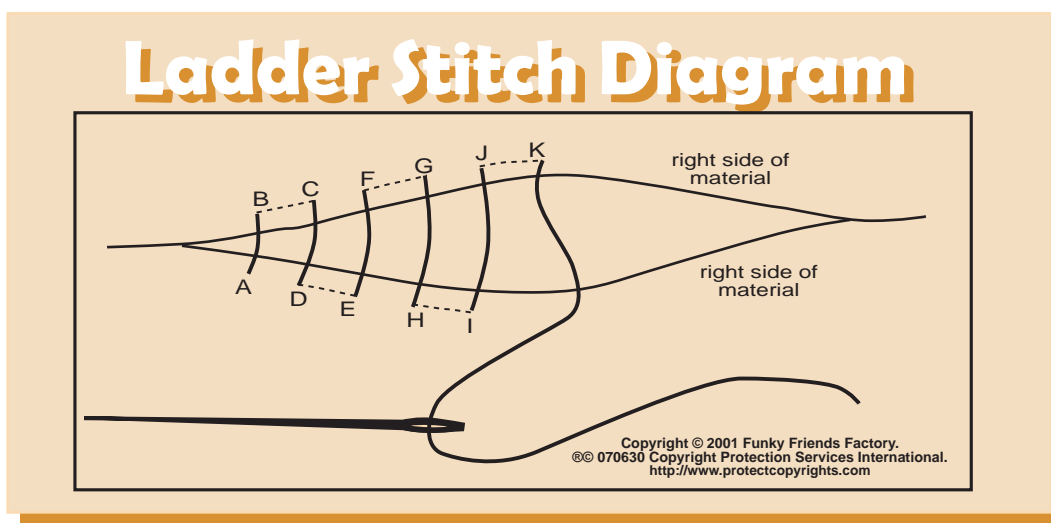
The toes must touch the table

STEP 7 - Sew the body

- Pin the **TOP BODY PIECES** to the **TUMMY PIECE**, with the arms and legs pushed inside. (Roll them up nice and tight!)
- Sew the **TOP BODY PIECES** to the **TUMMY PIECE**, from N – L - N, remember to leave a gap open on one side, between one of the arms and legs so you can turn your teddy for stuffing!
- Pin then sew the head to the body at the neck seam, with right sides together, matching point G. (I find it's easiest to turn the head right sides out first, then place it facing into the body when you pin and sew the neck seam.)
- Push the head back out of the body and sew the Teddy closed along the top of the **TOP BODY PIECES** and **BACK HEAD PIECES**.

STEP 8 - Finishing touches

- Turn your Teddy right sides out through the gap left on one side.
- If you are using craft eyes, insert them now before you stuff your teddy. If you are using buttons or beads for eyes, you will sew them on when Teddy's head is stuffed! (Do not use beads, buttons or craft eyes for children under 3 years old, it is safer to embroider the eyes.)
- Stuff the head with toy stuffing.
- Embroider the nose with pink embroidery thread, using satin stitch to form an upside-down triangle. If you find stitching evenly is too difficult, you can sew or glue a piece of pink felt in position for the nose.
- Fill the body, arms and legs with toy stuffing and sew up the openings on Honey's side, arms and legs using a ladder stitch.



Your *Honey Teddy* is ready to love!



COPYRIGHT Infomation:

I get great pleasure knowing that other people like me can use my Funky Friends Factory doll and toy patterns at home to **make some money with their sewing talents!**

AND... I am quite happy for people to sell the toys that they make from my pattern designs **as long as they follow the Copyright Guidelines.** If you want to make Funky Friends toys to sell ~ please visit my website to find out how we can work together to help YOU make some money and help ME to keep doing what I love to do...**Make MORE patterns for YOU!**

<http://funkyfriendsfactory.com/sell-funky-friends-factory-toys/>

I have faith that you will respect the long hours and creative energy that have gone into producing the Funky Friends Factory patterns.

Thank you, Pauline.